



## CLASSIC+ SERIES™

ROTARY LOBE PRODUCT LINE



## FEATURES & BENEFITS

### CLEANABILITY

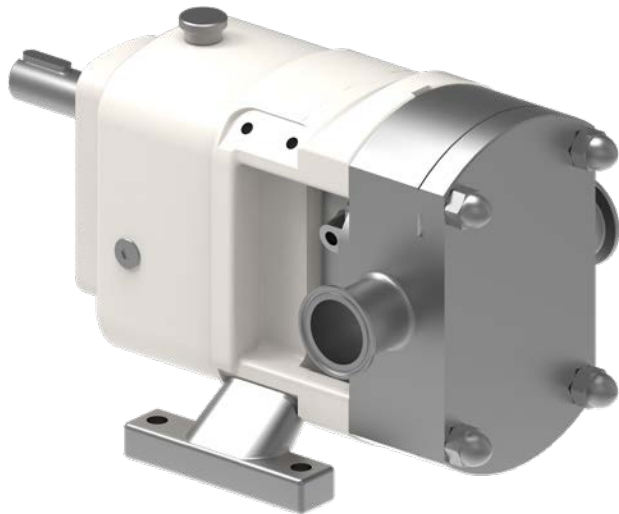
- Modular pump design promotes easy disassembly for COP (Clean Out of Place) & CIP (Clean In Place)
- Casing profile cusps maximize efficiency & draining capability

### PERFORMANCE

- Timed, non-contacting rotors minimize shear while providing extended run-dry capability
- Helical timing gears provide high torque & quieter operation for extended pump life
- Tapered roller bearings provide higher operating speeds & better discharge pressures

### EASE OF MAINTENANCE

- Removable foot for easier placement
- Classic RLP design



## PERFORMANCE

### MODELS

Model	Displacement		Max Pressure		Max Speed	Standard Ports		Max Capacity		Max Temperature	
	USG/rev.	l/rev.	PSI	BAR	RPM	In	mm	GPM	m³/h	°F	°C
10/0005/12	0.0122	0.046	174	12	1400	1	25	17.1	3.9	300	150
10/0008/08	0.0219	0.083	115	8	1400	1 1/2	38	30.7	7	300	150
10/0011/05	0.0293	0.111	70	5	1400	1 1/2	38	41	9.3	300	150
20/0020/12	0.0534	0.202	174	12	1000	1 1/2	38	53.4	12.1	300	150
20/0031/07	0.0827	0.313	100	7	1000	2	50	82.7	18.8	300	150
30/0069/12	0.1834	0.694	174	12	750	2	50	137.6	31.2	300	150
30/0113/07	0.2972	1.125	100	7	750	3	76	222.9	50.6	300	150
40/0180/12	0.4756	1.8	174	12	700	3	76	332.9	75.6	300	150
40/0250/07	0.6605	2.5	100	7	700	4	101	462.4	105	300	150
50/0351/12	0.9284	3.514	174	12	650	4	101	603.5	137	355	180
50/0525/08	1.387	5.25	115	8	600	6	150	832.2	189	355	180



**CAPACITY**  
to 832 GPM  
(189 m³/h)



**PRESSURE**  
to 174 PSI  
(12 BAR)



**VISCOSITY**  
to 910,000 SSU  
(200,000 cSt)



**TEMPERATURE**  
to +355°F  
(+180°C)

## PORTING

- Complete range of hygienic clamp, screw, flange & industrial screw connections
- Tri-clamp, flanged, DIN, IMDA, NPT, BSP, etc.

## SEALING

- Single O-ring
- Single mechanical
- Single mechanical with flush or quench
- Double mechanical with flush
- Gland packing
- Gland packing with lantern ring with flush
- Complete range of material options

## GEAR BOX

- Powder-coated or painted standard (size dependent)

## ROTOR & CASING OPTIONS

- 316L stainless steel pump casing with interior finished to 3-A standards
- 316L stainless steel rotors
- Improved surface finishes & electropolishing optional
- Front cover jacket or rotor case saddles

## TYPICAL APPLICATIONS

- Pharmaceutical
- Personal Care
- Foods
- Beverage
- Dairy
- Confectionary
- Chemical

## BENEFITS OF MAINTENANCE KITS:

- Everything you need in one place
- Reduce frequency of repairs
- Increase service life
- Increase uptime
- Save time & money
- Kits include exploded diagram & parts list



## REBUILD VS. REPLACE

- Kits are designed to save time & money, making preventive maintenance easier & more cost-effective
- Pumps are designed & built to the highest standards, for long life & to be rebuilt instead of replaced when applicable
- Tool kits also available

# VIKING PUMP®

**VIKING PUMP, INC.**  
A Unit of IDEX Corporation  
406 State Street  
Cedar Falls, Iowa 50613 U.S.A.  
[vikingpump.com](http://vikingpump.com)

**CONTACT YOUR STOCKING DISTRIBUTOR TODAY**

GLOBAL LEADER IN POSITIVE DISPLACEMENT PUMPING SOLUTIONS: Cedar Falls, Iowa, USA | Windsor, Ontario, Canada | Shannon, Ireland | Eastbourne, United Kingdom

**IDEX**

© Copyright 2022 Viking Pump, Inc. All Rights Reserved. Rev0322 | Form No. 1723